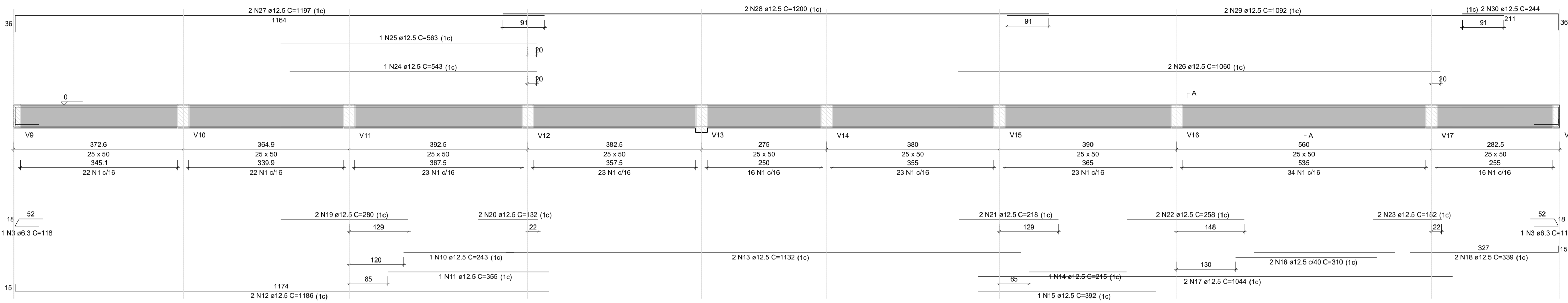
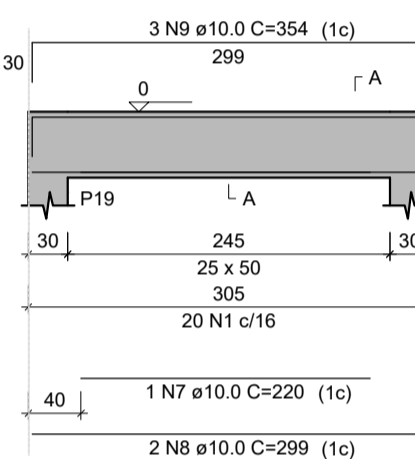


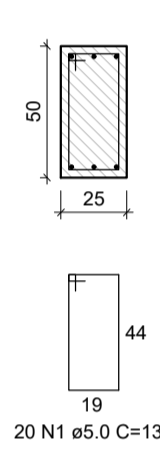
V1
ESC 1:50



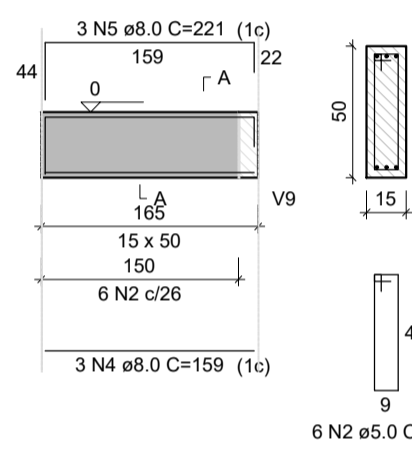
V2
ESC 1:50



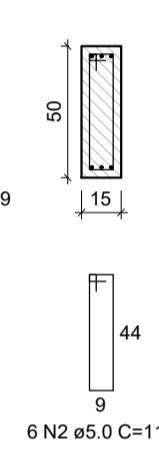
SEÇÃO A-A
ESC 1:25



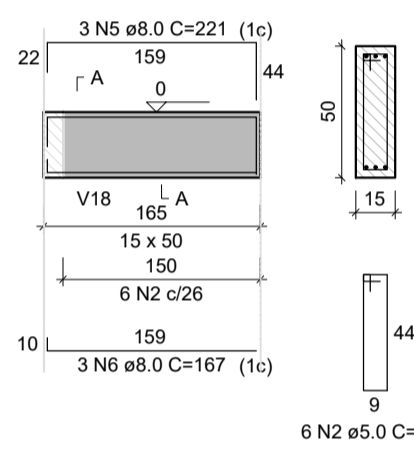
V3
ESC 1:50



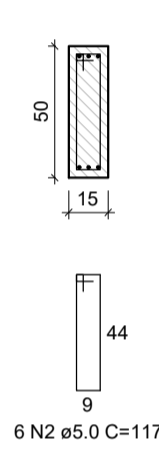
SEÇÃO A-A
ESC 1:25



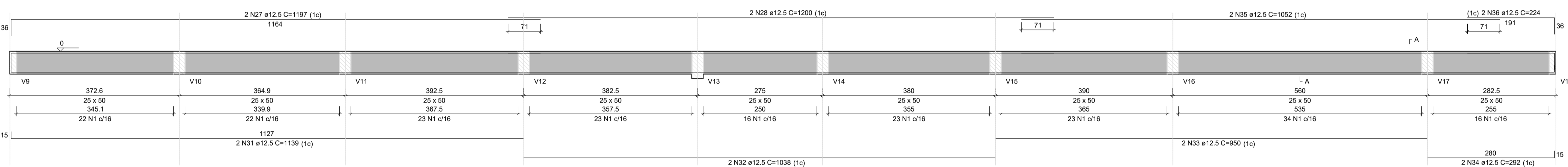
V4
ESC 1:50



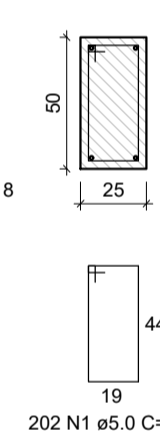
SEÇÃO A-A
ESC 1:25



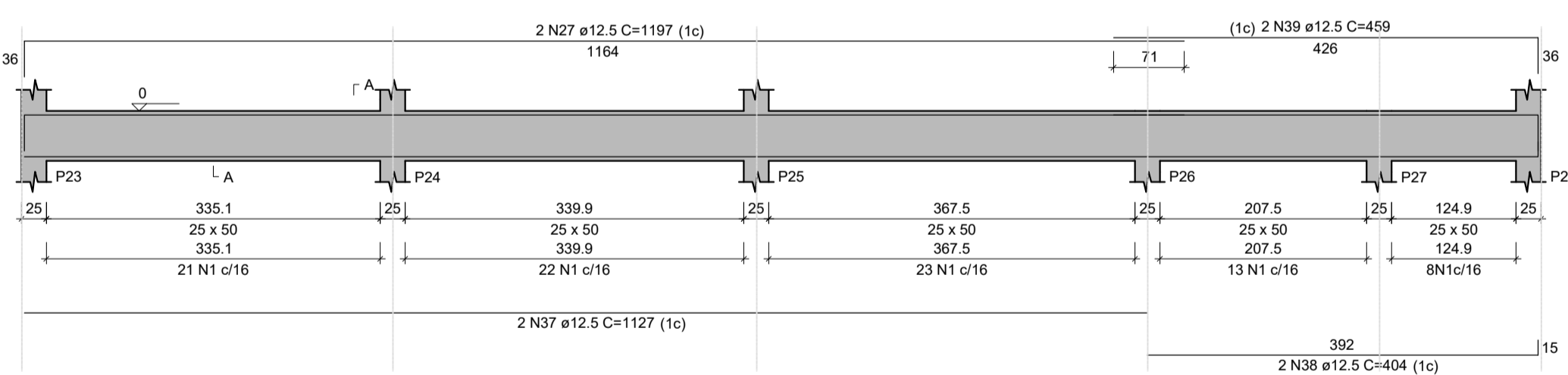
V5
ESC 1:50



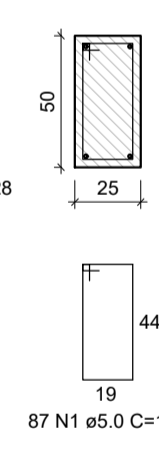
SEÇÃO A-A
ESC 1:25



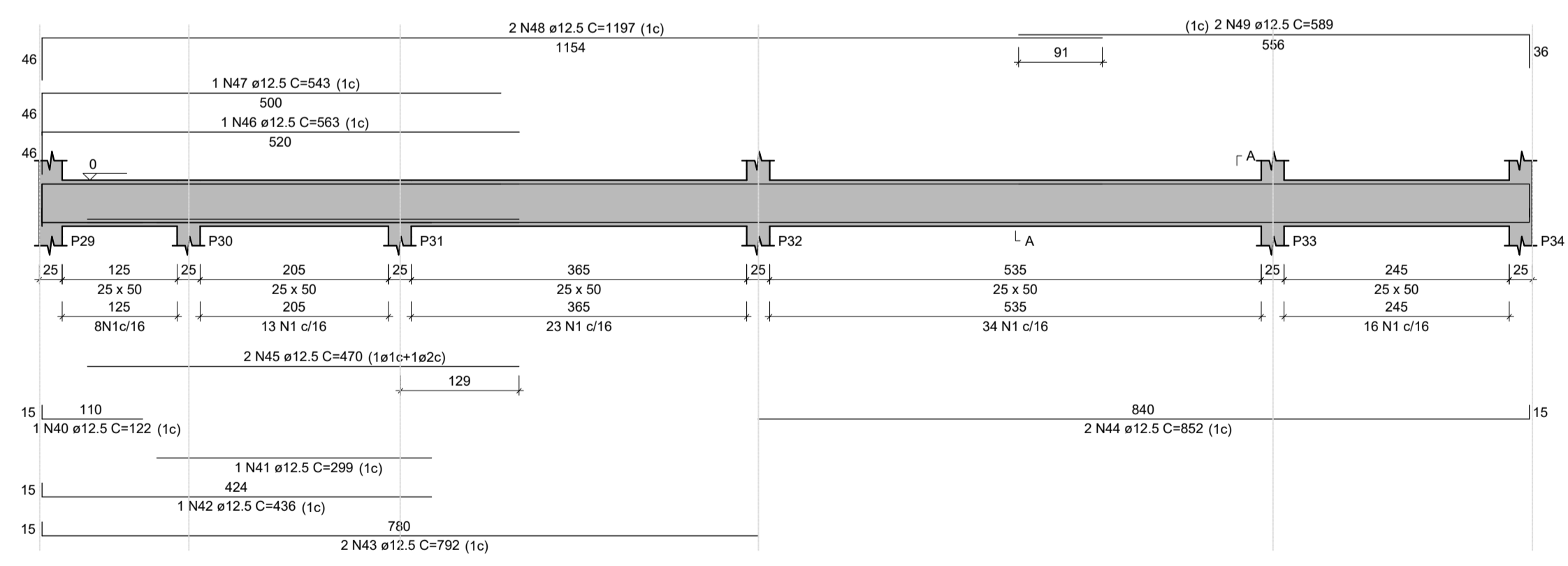
V6
ESC 1:50



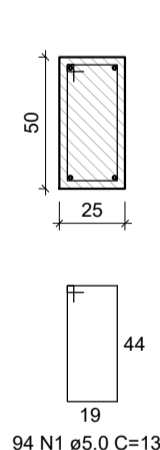
SEÇÃO A-A
ESC 1:25



V7
ESC 1:50



SEÇÃO A-A
ESC 1:25



RELAÇÃO DO AÇO

AÇO	N	DIAM (mm)	QUANT	C.UNIT (cm)	C.TOTAL (cm)
CA60	1	5.0	605	137	82885
CA50	2	5.0	12	117	1404
	3	6.3	2	118	236
	4	8.0	3	159	477
	5	8.0	6	221	1326
	6	8.0	3	167	501
	7	10.0	1	220	220
	8	10.0	2	299	598
	9	10.0	3	354	1062
	10	12.5	1	243	243
	11	12.5	1	355	355
	12	12.5	2	1186	2372
	13	12.5	2	1132	2264
	14	12.5	1	215	215
	15	12.5	1	392	392
	16	12.5	2	310	620
	17	12.5	2	1044	2088
	18	12.5	2	339	678
	19	12.5	2	280	560
	20	12.5	2	132	264
	21	12.5	2	218	436
	22	12.5	2	258	516
	23	12.5	2	152	304
	24	12.5	1	543	543
	25	12.5	1	563	563
	26	12.5	2	1060	2120
	27	12.5	6	1197	7182
	28	12.5	4	1200	4800
	29	12.5	2	1092	2184
	30	12.5	2	244	488
	31	12.5	2	1139	2278
	32	12.5	2	1038	2076
	33	12.5	2	950	1900
	34	12.5	2	292	584
	35	12.5	2	1052	2104
	36	12.5	2	224	448
	37	12.5	2	1127	2254
	38	12.5	2	404	808
	39	12.5	2	459	918
	40	12.5	1	122	122
	41	12.5	1	299	299
	42	12.5	1	436	436
	43	12.5	2	792	1584
	44	12.5	2	852	1704
	45	12.5	2	470	940
	46	12.5	1	563	563
	47	12.5	1	543	543
	48	12.5	2	1197	2394
	49	12.5	2	589	1178

RESUMO DO AÇO

AÇO	DIAM (mm)	C.TOTAL (m)	PESO + 10% (kg)
CA50	6.3	2.4	0.6
	8.0	23	10
	10.0	18.8	12.7
	12.5	523.2	554.4
CA60	5.0	842.9	142.9
PESO TOTAL (kg)			
CA50		577.8	
CA60		142.9	

Volume de concreto (C-25) = 13.07 m³
Área de forma = 131.98 m²

Revisão	Data	Discriminação
00	08 de março de 2019	Emissão de Projeto Estrutural

PROJETO ESTRUTURAL

Endereço	Projeto
Rua de Acesso ao Ginásio de Esporte Penha - Paulo Lopes - Santa Catarina	

Proprietário	Resp. Técnico

Prefeitura Municipal de Paulo Lopes
 CNPJ: 82.892.365/0001-32

Vitor Mateus Macuglia
 CREA/SC: 152568-6

Conteúdo
DETALHAMENTO DE VIGAS BALDRAME:
 V1, V2, V3, V4, V5, V6 e V7

Equipe Técnica
 Vitor M. Macuglia
 Engenheiro Civil - CREA/SC
 e-mail: vmengcivil@gmail.com
 fone: (48) 99603-1782

Arquivo
 Ginasio_PL_2019_01

Francha
 07/14

Escala
 Indicada

ART

ENGENHARIA