

RELAÇÃO DO AÇO

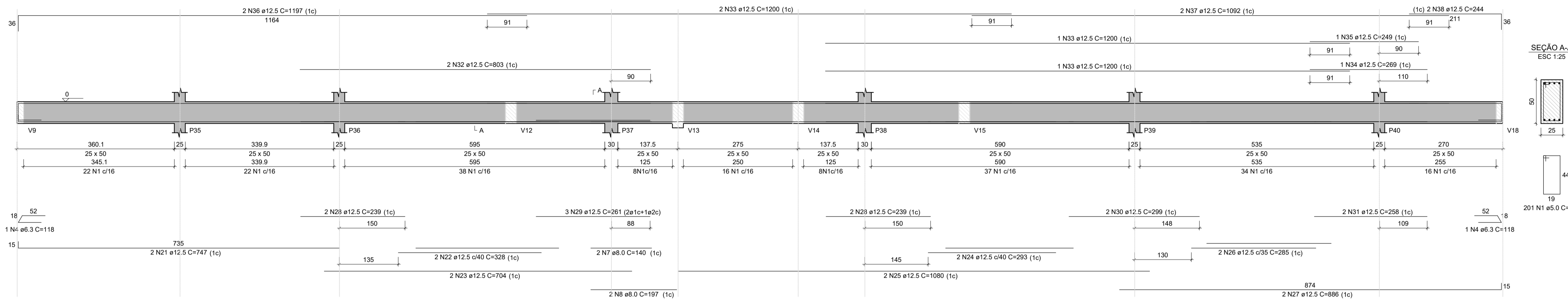
AÇO	N	DIAM (mm)	QUANT	C.UNIT (cm)	C.TOTAL (cm)
V8					
V11					
V14					
V15					
V17					
CA60	1	5.0	456	137	62472
	2	5.0	76	117	8892
CA50	3	5.0	33	157	5181
	4	6.3	2	118	236
	5	6.3	12	314	3768
	6	6.3	5	138	690
	7	8.0	2	140	280
	8	8.0	2	197	394
	9	8.0	8	100	800
	10	8.0	6	562	3372
	11	8.0	2	108	216
	12	8.0	2	165	330
	13	8.0	4	103	412
	14	10.0	1	113	113
	15	10.0	1	188	188
	16	10.0	1	103	103
	17	10.0	2	564	1128
	18	10.0	1	256	256
	19	10.0	2	304	608
	20	10.0	3	652	1956
	21	12.5	2	747	1494
	22	12.5	2	328	656
	23	12.5	2	704	1408
	24	12.5	2	293	586
	25	12.5	2	1080	2160
	26	12.5	2	285	570
	27	12.5	2	886	1772
	28	12.5	4	239	956
	29	12.5	3	261	783
	30	12.5	2	239	478
	31	12.5	2	258	516
	32	12.5	2	803	1606
	33	12.5	4	1200	4800
	34	12.5	1	269	269
	35	12.5	1	249	249
	36	12.5	2	1197	2394
	37	12.5	2	1092	2184
	38	12.5	2	244	488
	39	12.5	8	563	4504
	40	12.5	2	264	528
	41	12.5	14	631	8834
	42	12.5	12	496	5952
	43	12.5	4	568	2272
	44	12.5	3	256	532
	45	12.5	1	228	228
	46	12.5	16	633	10128
	47	12.5	3	256	768
	48	12.5	2	240	480
	49	12.5	2	248	496
	50	12.5	4	494	1976
	51	12.5	4	286	1144
	52	12.5	1	268	268
	53	12.5	2	262	524
	54	12.5	2	362	724
	55	12.5	3	549	1647
	56	12.5	2	556	1112
	57	12.5	1	223	223
	58	12.5	2	254	508
	59	12.5	2	265	530
	60	12.5	1	273	273
	61	12.5	3	258	774

RESUMO DO AÇO

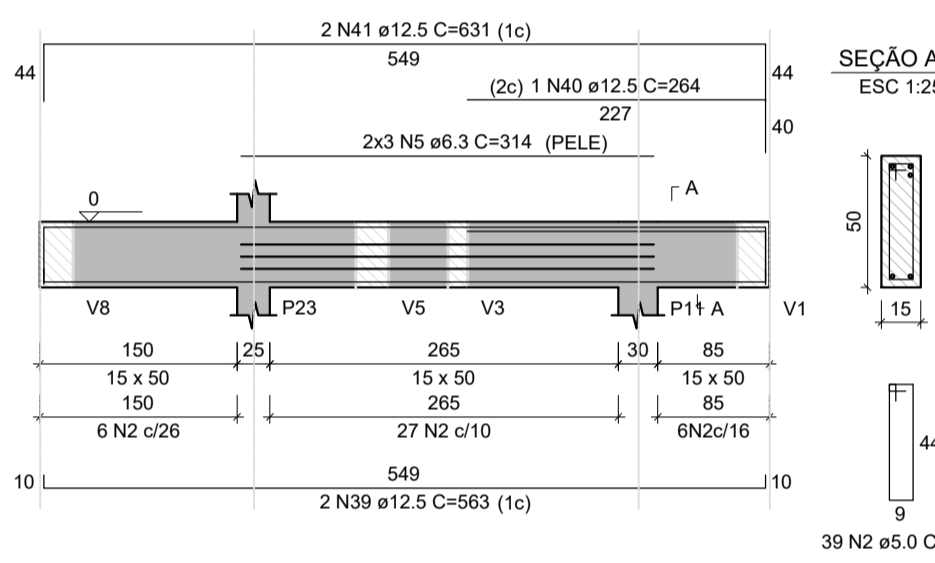
AÇO	DIAM (mm)	C.TOTAL (m)	PESO + 10% (kg)
CA50	6.3	46.9	12.6
	8.0	58	25.2
	10.0	43.5	29.5
	12.5	678.3	718.8
CA60	5.0	765.5	129.8
PESO TOTAL (kg)			
CA50		786.2	
CA60		129.8	

Volume de concreto (C-25) = 10.77 m³
Área de forma = 111.88 m²

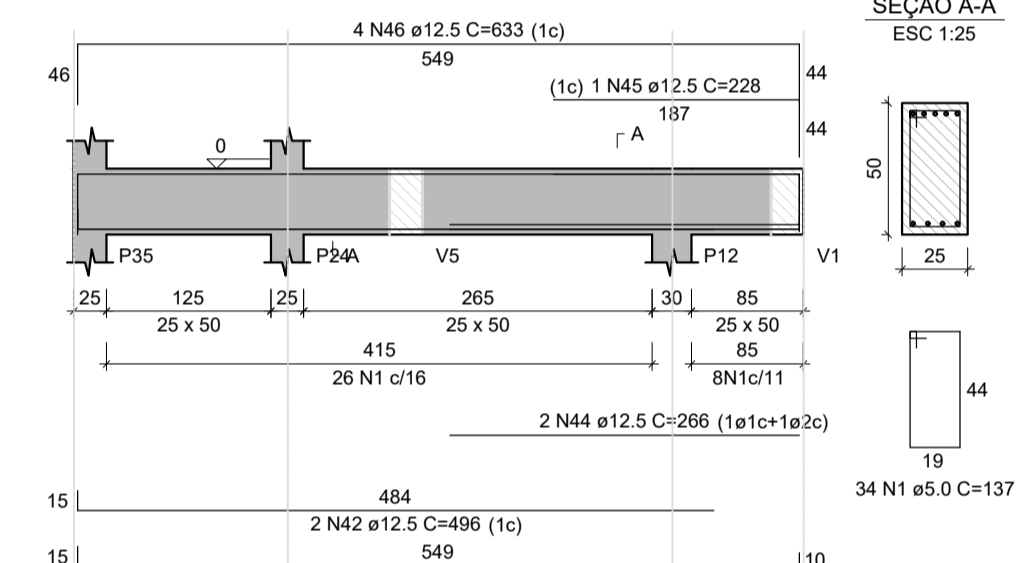
V8
ESC 1:50



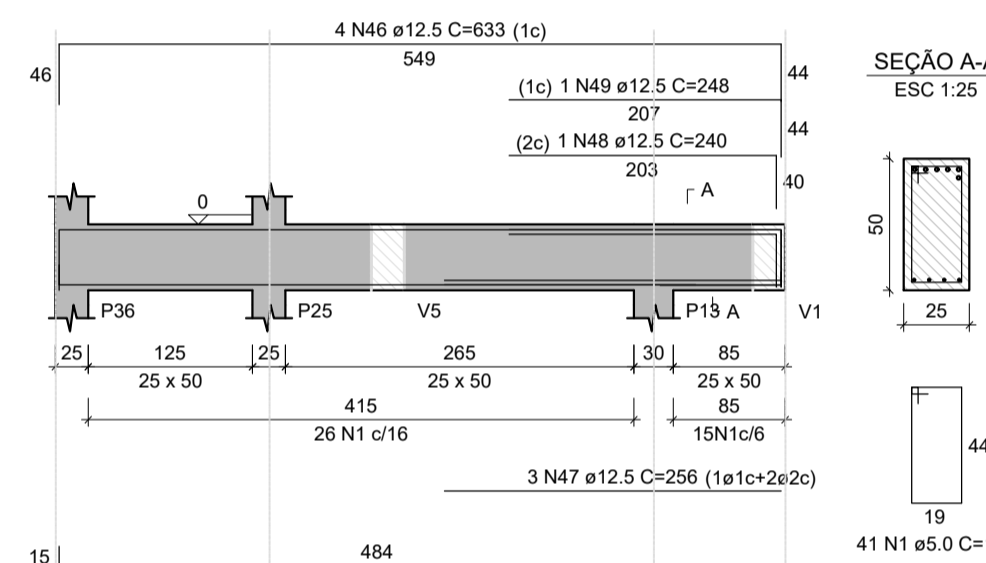
V9
ESC 1:50



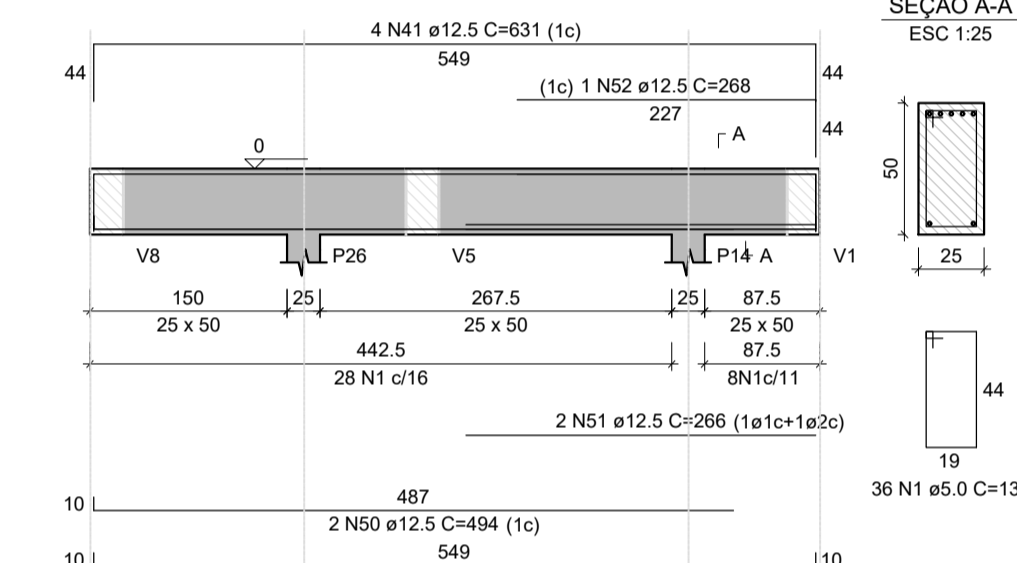
V10
ESC 1:50



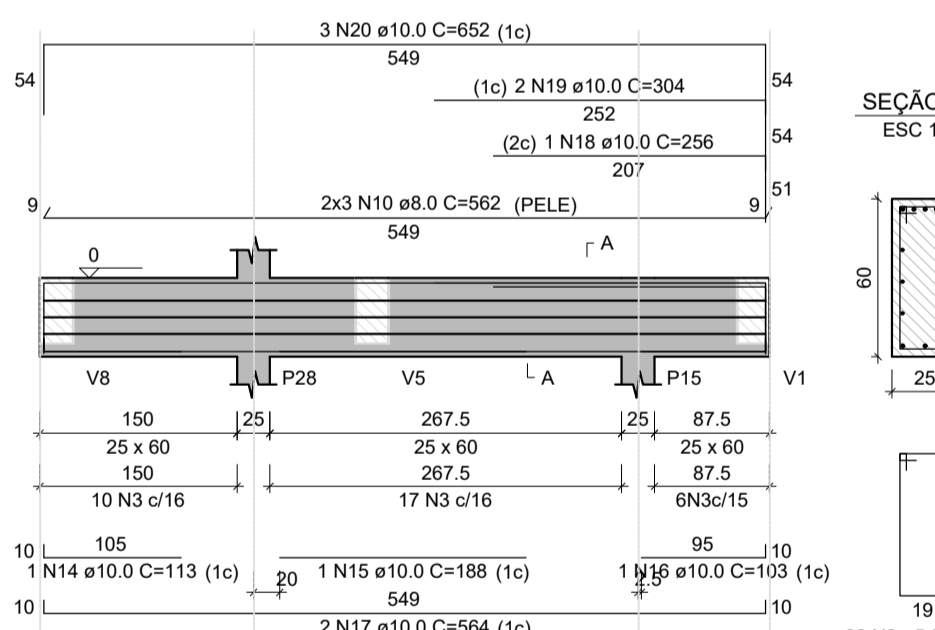
V11
ESC 1:50



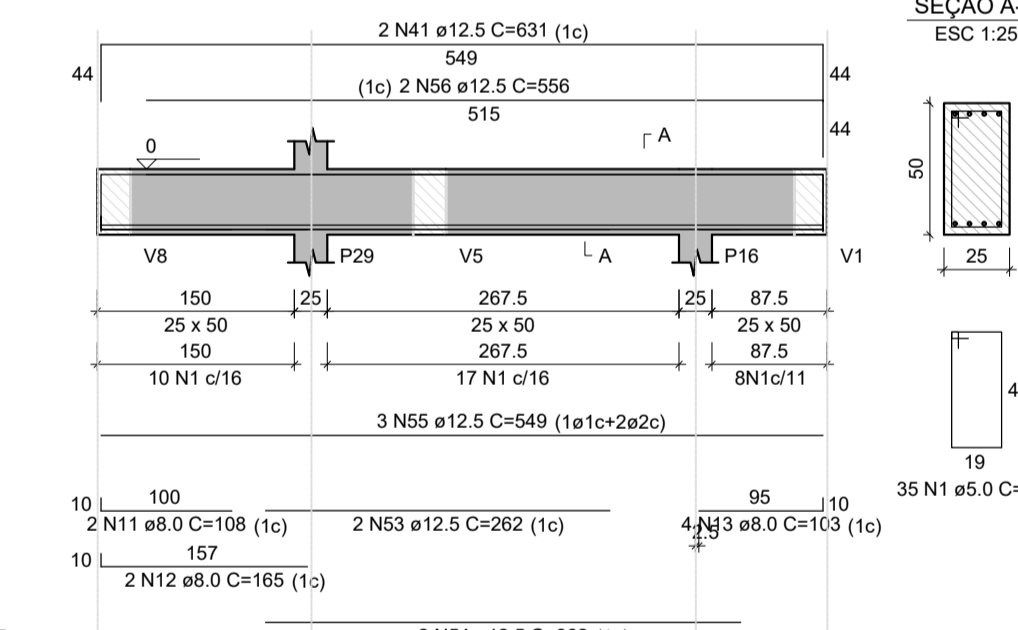
V12
ESC 1:50



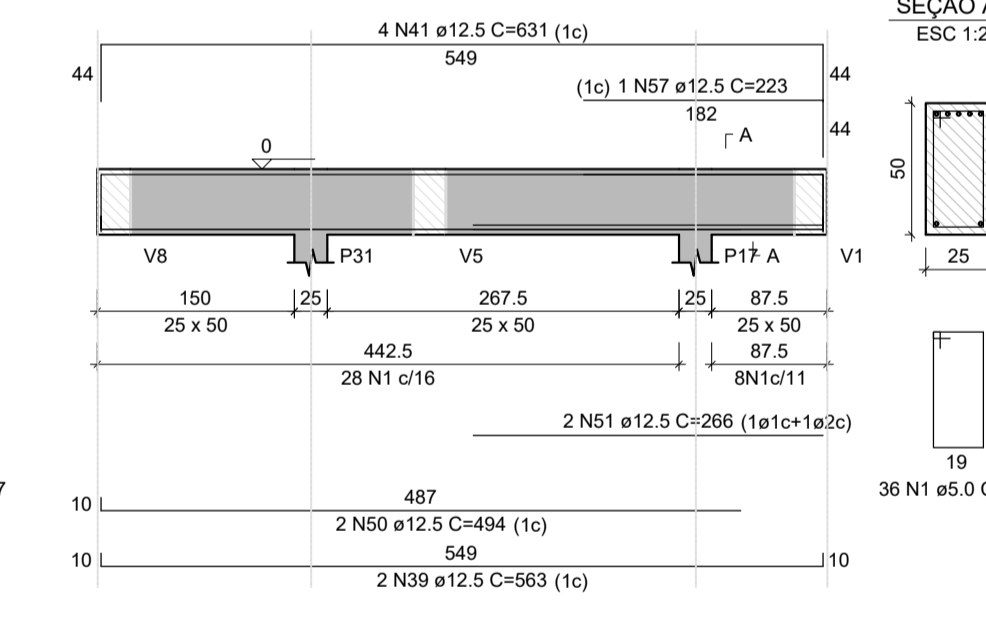
V13
ESC 1:50



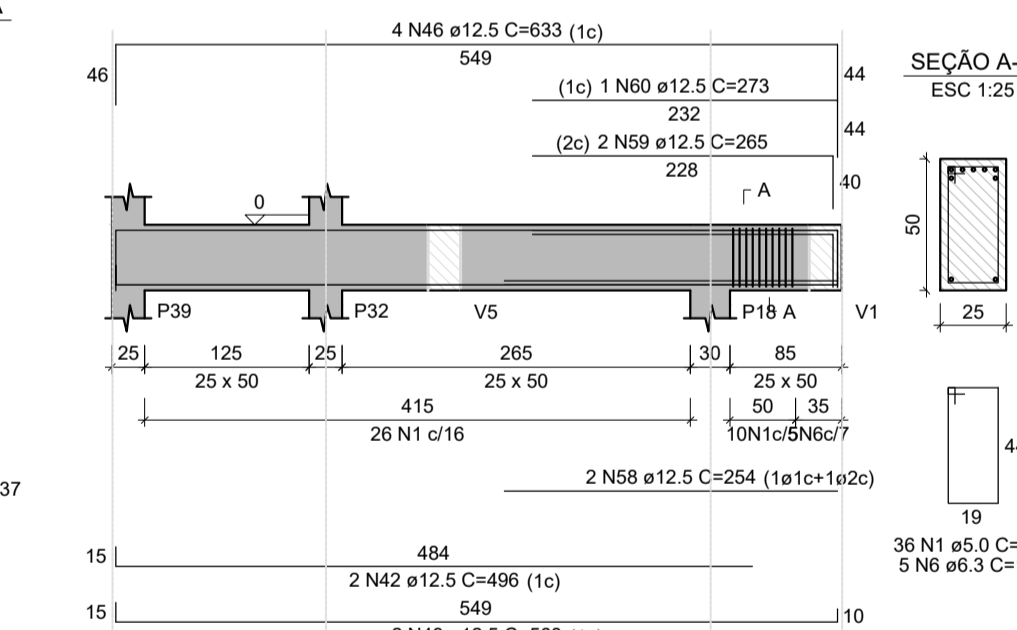
V14
ESC 1:50



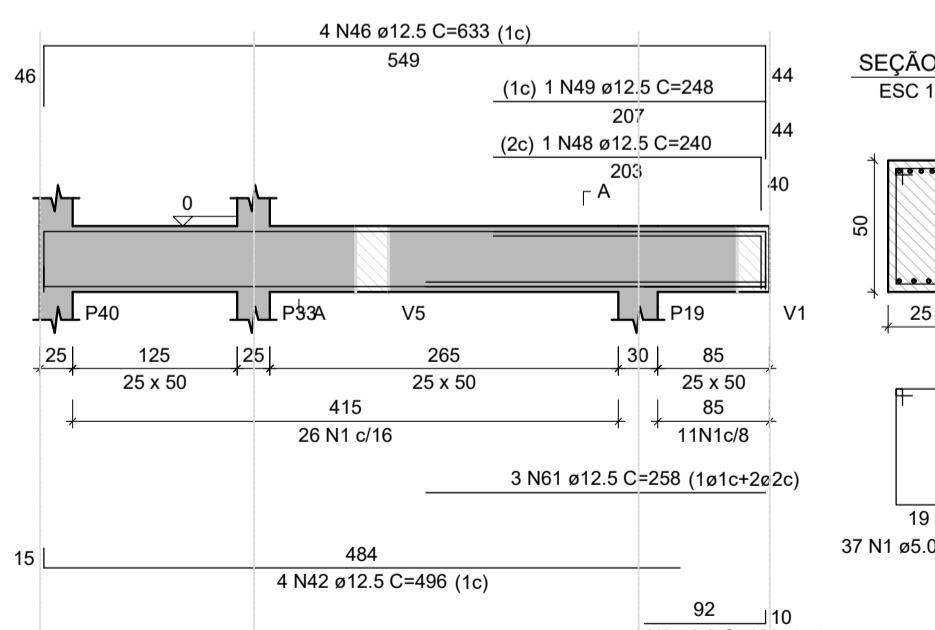
V15
ESC 1:50



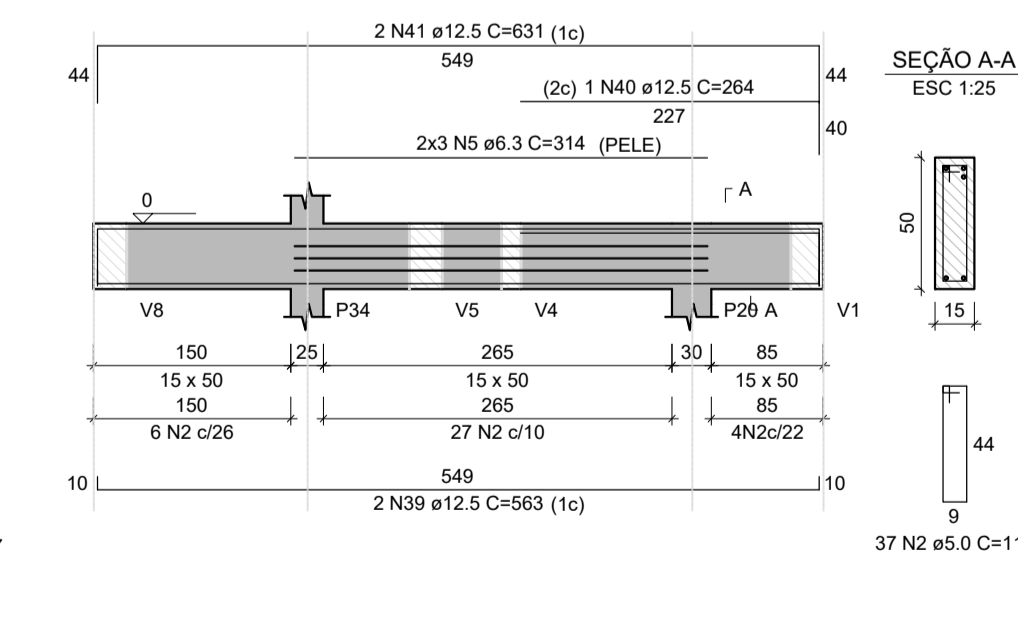
V16
ESC 1:50



V17
ESC 1:50



V18
ESC 1:50



Revisão	Data	Discriminação
00	08 de março de 2019	Emissão de Projeto Estrutural

PROJETO ESTRUTURAL

Endereço	Projeto
Rua de Acesso ao Ginásio de Esporte Penha - Paulo Lopes - Santa Catarina	

Proprietário	Resp. Técnico

Prefeitura Municipal de Paulo Lopes
CNPJ: 82.892.365/0001-32

Vitor Mateus Macuglia
CREA/SC: 152568-6

Conteúdo: **DETALHAMENTO DE VIGAS BALDRAME:**
V8, V9, V10, V11, V12, V13, V14, V15, V16, V17 e V18

Equipe Técnica: Vitor M. Macuglia
Engenheiro Civil - CREA/SC
e-mail: vm.engcivil@gmail.com
fone: (48) 9960-1782

Arquivo: Ginasio_PL_2019_01

Escala: Indiciada

Plano: 08/14

ENGENHARIA