

AÇO	N	DIAM (mm)	QUANT	C.UNIT (cm)	C.TOTAL (cm)
CA60	1	5.0	232	137	31784
	2	5.0	62	157	9734
	3	5.0	28	117	3276
	4	5.0	189	167	31563
	5	6.3	2	118	236
	6	6.3	32	441	14112
	7	6.3	24	1196	28704
	8	6.3	12	380	4560
	9	6.3	12	480	5760
	10	8.0	3	282	846
	11	8.0	3	314	942
	12	8.0	1	190	190
	13	8.0	4	309	1236
	14	8.0	6	329	1974
	15	8.0	1	235	235
	16	10.0	4	435	1740
	17	10.0	1	166	166
	18	10.0	2	498	996
	19	10.0	4	440	1760
	20	10.0	4	537	2148
	21	10.0	2	505	1010
	22	10.0	8	177	1416
	23	10.0	8	238	1904
	24	10.0	1	78	78
	25	10.0	1	143	143
	26	12.5	2	1139	2278
	27	12.5	2	220	440
	28	12.5	2	1038	2076
	29	12.5	2	950	1900
	30	12.5	2	292	584
	31	12.5	2	238	476
	32	12.5	2	238	476
	33	12.5	2	565	1130
	34	12.5	1	295	295
	35	12.5	2	1197	2394
	36	12.5	2	1200	2400
	37	12.5	2	1101	2202
	38	12.5	2	248	496
	39	12.5	1	735	1470
	40	12.5	2	798	1596
	41	12.5	1	315	315
	42	12.5	1	195	195
	43	12.5	1	1197	2394
	44	12.5	2	500	1000
	45	12.5	2	792	1584
	46	12.5	2	840	1680
	47	12.5	1	194	194
	48	12.5	1	355	355
	49	12.5	2	1197	2394
	50	12.5	2	600	1200

AÇO	DIAM (mm)	C.TOTAL (m)	PESO + 10% (kg)
CA50	6.3	533.7	143.7
	8.0	54.1	23.5
	10.0	113.6	7.7
	12.5	315.2	334
CA60	5.0	763.6	129.5

PESO TOTAL (kg): CA50 578.2, CA60 129.5

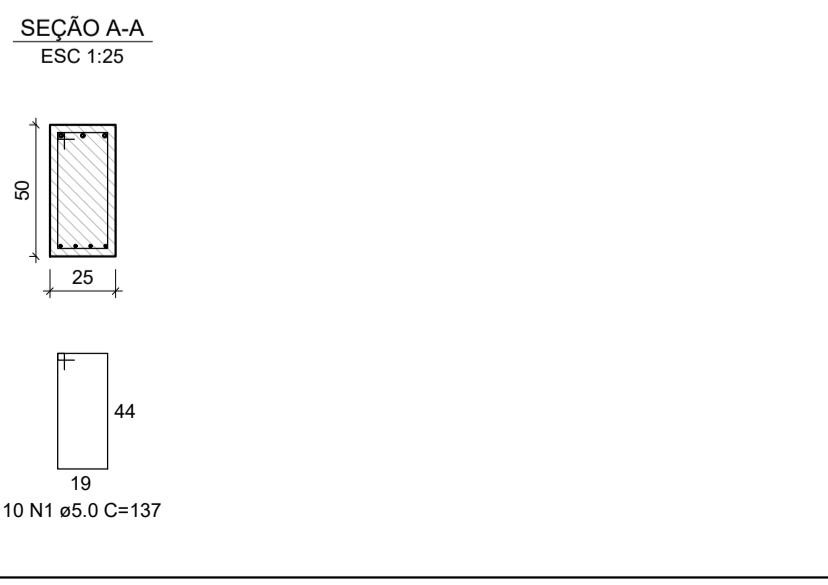
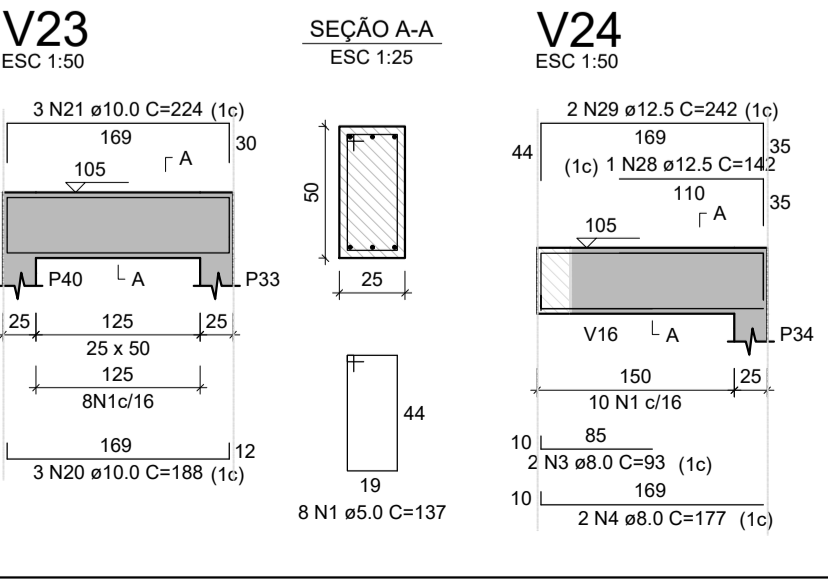
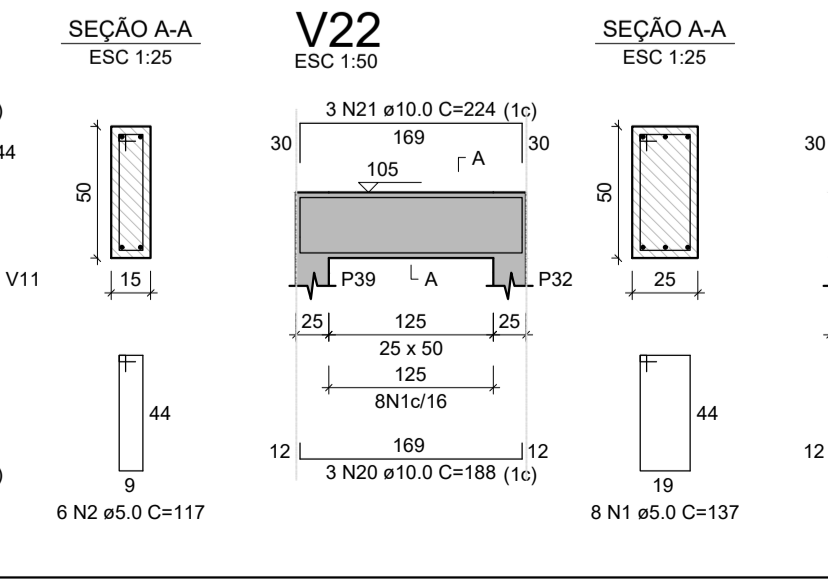
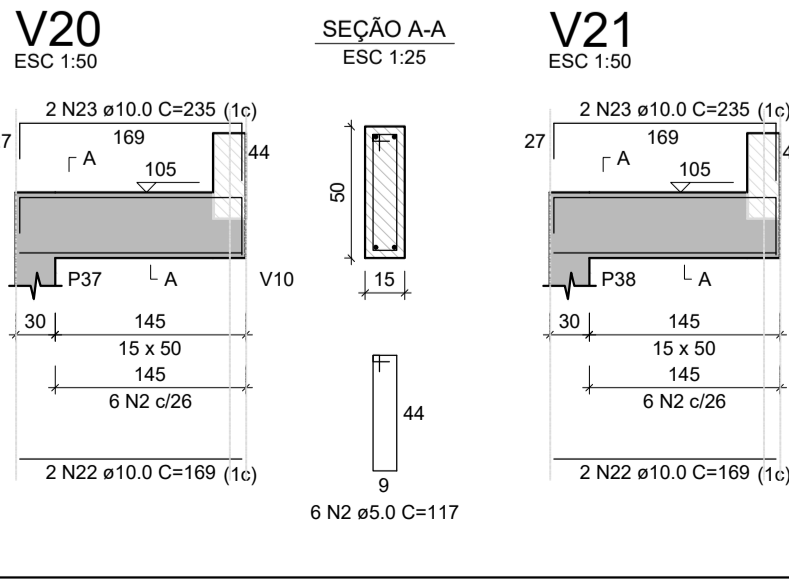
Volume de concreto (C-25) = 12.41 m³
Área de forma = 133.46 m²

AÇO	N	DIAM (mm)	QUANT	C.UNIT (cm)	C.TOTAL (cm)
CA60	1	5.0	230	137	31510
	2	5.0	12	117	1404
	3	8.0	2	93	186
	4	8.0	2	177	354
	5	10.0	1	150	150
	6	10.0	1	115	115
	7	10.0	2	732	1464
	8	10.0	1	303	303
	9	10.0	2	632	1264
	10	10.0	3	1198	3594
	11	10.0	3	295	885
	12	10.0	1	288	288
	13	10.0	1	255	255
	14	10.0	2	1187	2374
	15	10.0	3	277	831
	16	10.0	1	68	68
	17	10.0	2	177	354
	18	10.0	1	143	143
	19	10.0	2	238	476
	20	10.0	12	188	2256
	21	10.0	12	224	2688
	22	10.0	4	169	676
	23	10.0	4	235	940
	24	12.5	2	1197	2394
	25	12.5	2	429	858
	26	12.5	2	176	352
	27	12.5	3	253	759
	28	12.5	1	142	142
	29	12.5	2	242	484

AÇO	DIAM (mm)	C.TOTAL (m)	PESO + 10% (kg)
CA50	8.0	5.4	2.3
	10.0	191.2	129.7
	12.5	49.9	52.9
CA60	5.0	329.1	55.8

PESO TOTAL (kg): CA50 184.9, CA60 55.8

Volume de concreto (C-25) = 5.36 m³
Área de forma = 54.96 m²



Revisão 00 Data 08 de março de 2019 Discriminação Emissão de Projeto Estrutural

Endereço Rua de Acesso ao Ginásio de Esporte Penha - Paulo Lopes - Santa Catarina Projeto

Proprietário Resp. Técnico

Prefeitura Municipal de Paulo Lopes CNPJ: 82.892.365/0001-32 Vitor Mateus Macuglia CREA/SC: 152568-6

Conteúdo DETALHAMENTO DE VIGAS DE PATAMAR: V1, V2, V3, V4, V5, V6, V7, V8, V8, V9, V10, V11, V12, V13, V14, V15, V16, V17, V18, V19, V20, V21, V22, V23 e V24

Equipe Técnica Vitor M. Macuglia Engenheiro Civil - CREA/SC e-mail: vmengcivil@gmail.com fone: (48) 9960-1782 Franca

Arquivo Escala ART

ENGENHARIA Ginasio_PL_2019_01 Indicada