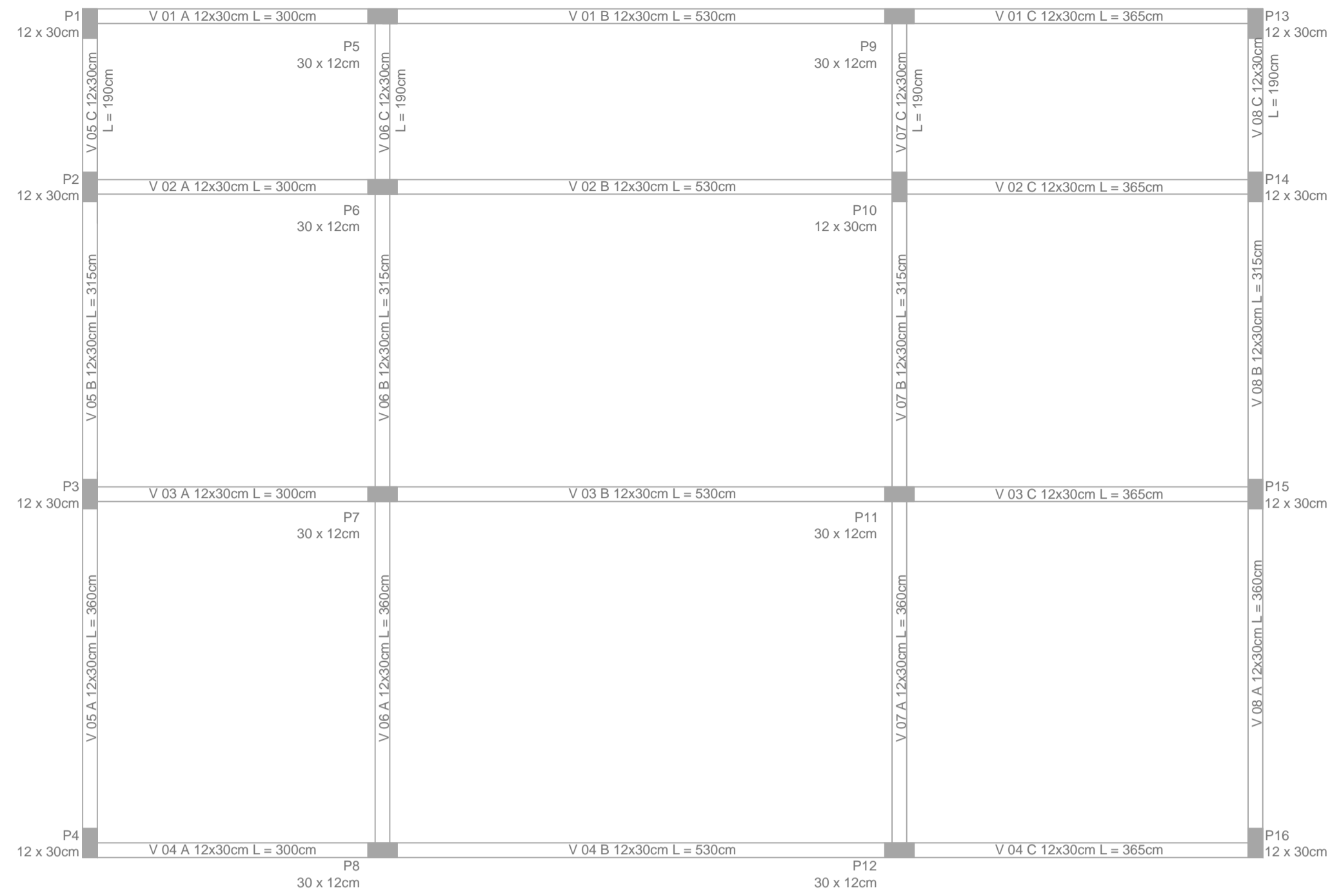
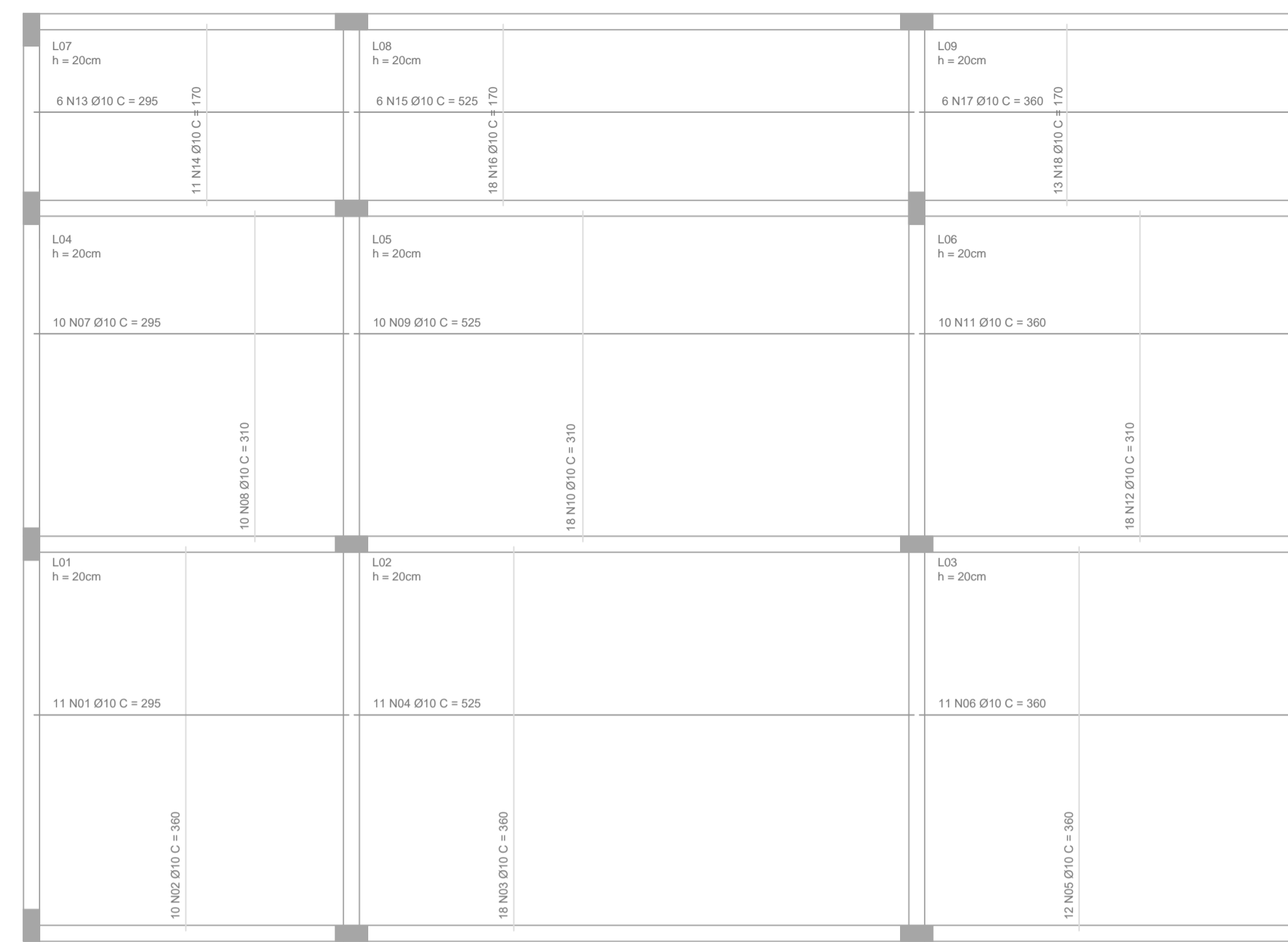


**PILARES E VIGAS**  
ESCALA 1 : 100

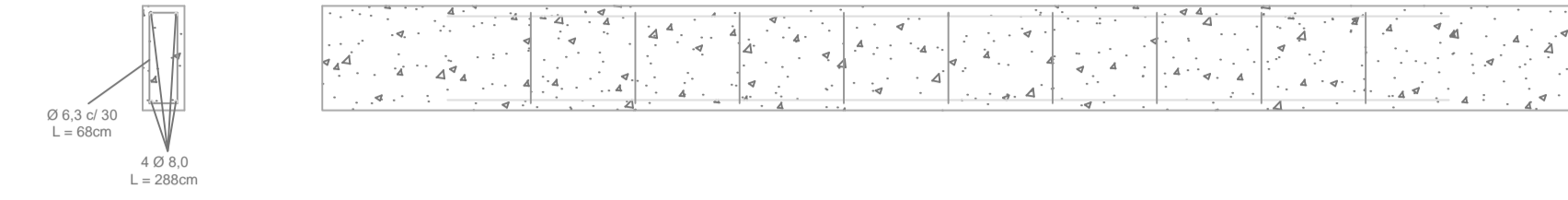


**FUNDAÇÃO (RADIER)**  
ESCALA 1 : 100

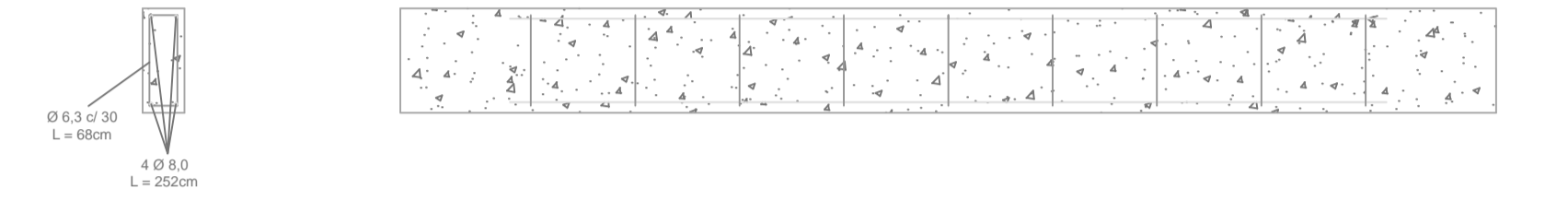


**DETALHE VIGAS TRANSVERSAIS (V05, V06, V07, V08)**  
ESCALA 1 : 20

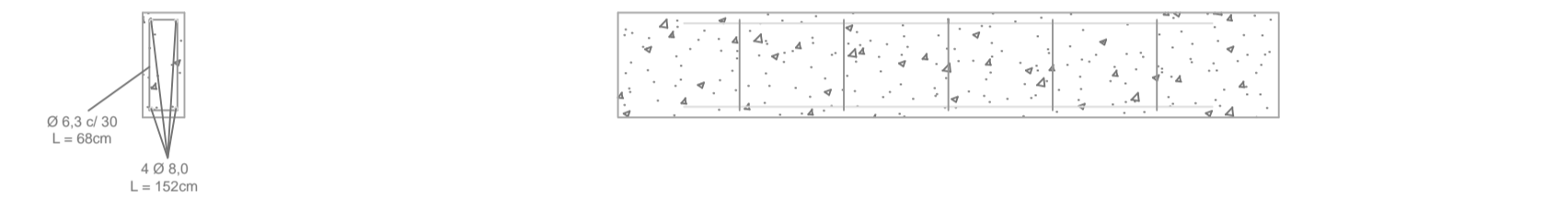
V 05 A / V06 A / V07 A / V08 A



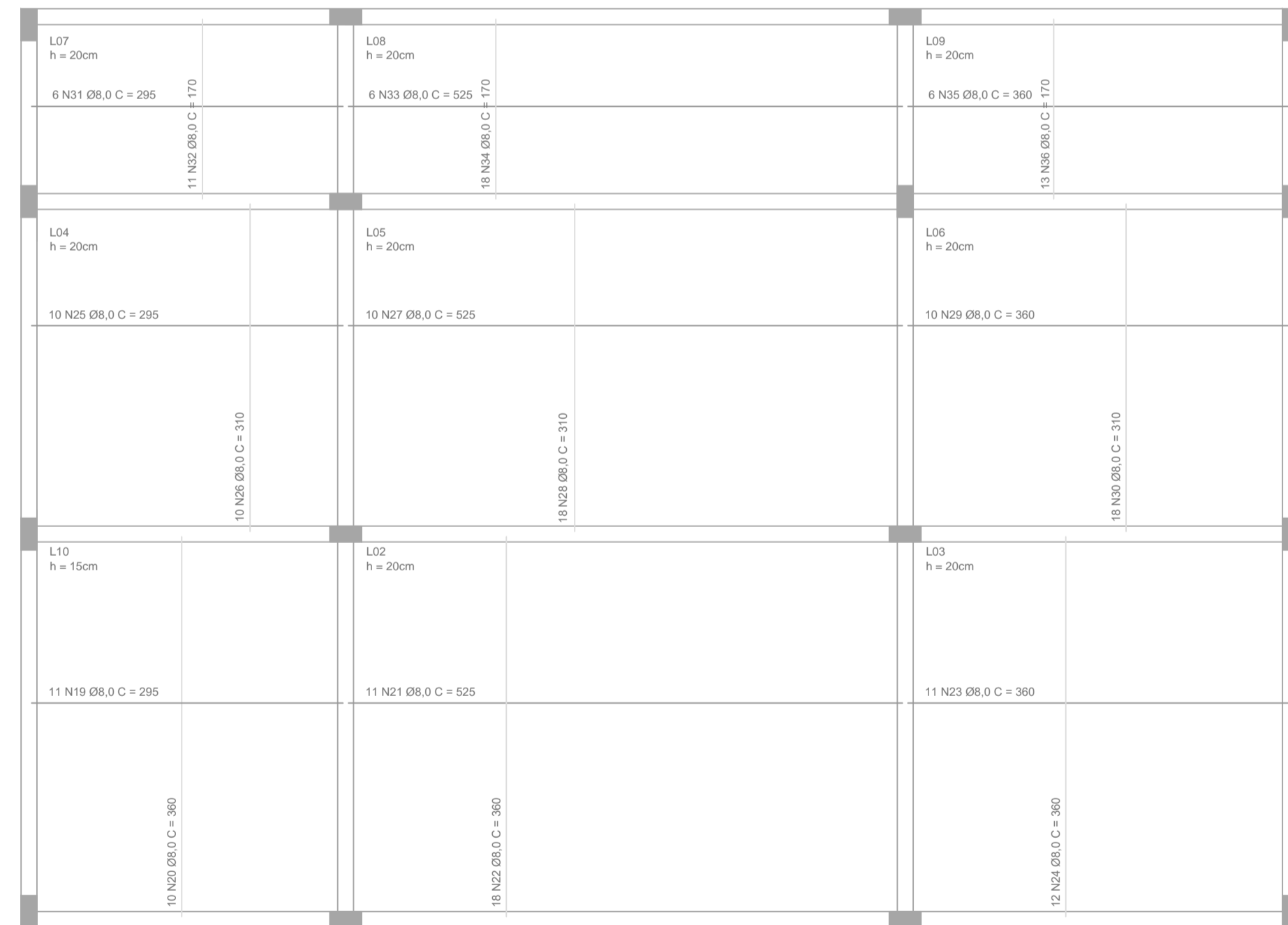
V 05 B / V06 B / V07 B / V08 B



V 05 C / V06 C / V07 C / V08 C

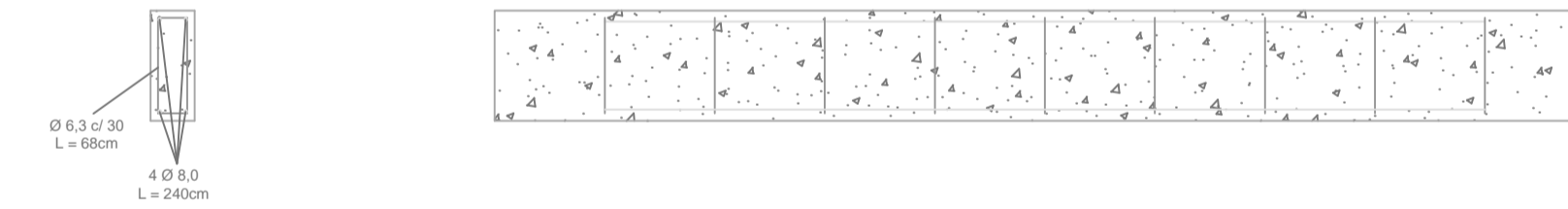


**LAJE DE COBERTURA**  
ESCALA 1 : 100

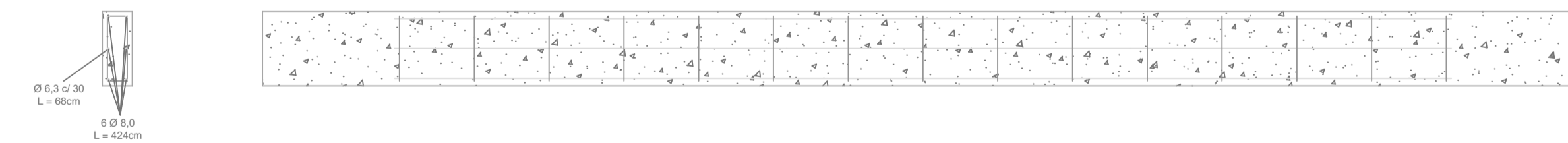


**DETALHE VIGAS LONGITUDINAIS (V01, V02, V03, V04)**  
ESCALA 1 : 20

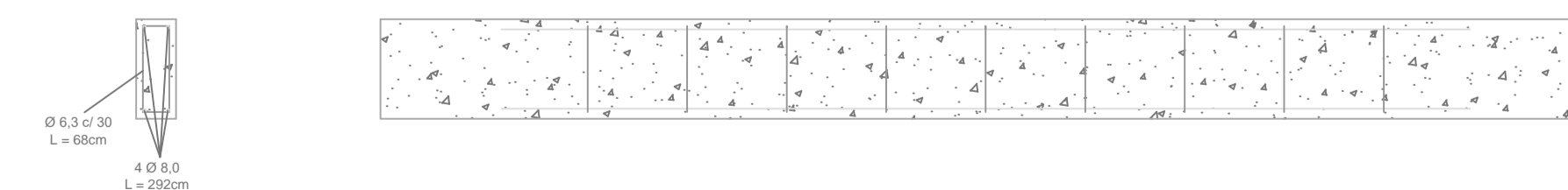
V 01 A / V02 A / V03 A / V04 A



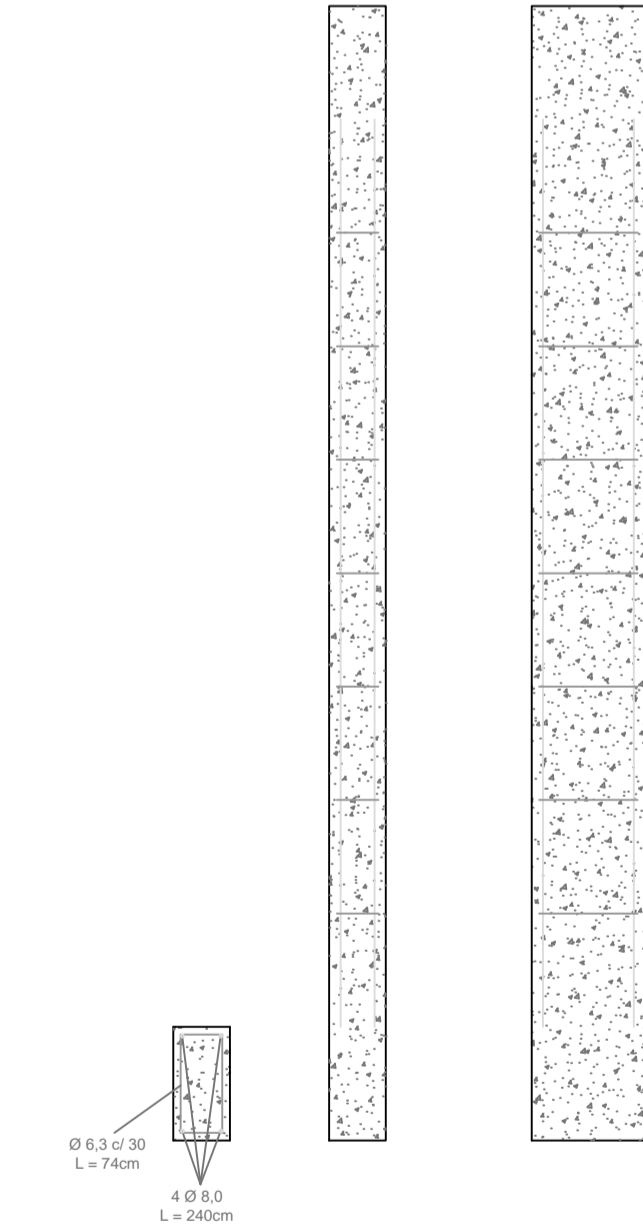
V 01 B / V02 B / V03 B / V04 B



V 01 C / V02 C / V03 C / V04 C



**DETALHE PILARES (P01 - P16)**  
ESCALA 1 : 20



**PREFEITURA MUNICIPAL DE PAULO LOPES**  
Rua José Pereira da Silva, 130 - Centro  
(48) 3253 - 0161  
engenharia@paulolopes.sc.gov.br

**AMPLIAÇÃO UBS LÚCIA HELENA DOS SANTOS**  
Secretaria Municipal de Saúde  
Rua Santa Catarina, s/n - Centro  
A = 105,27m<sup>2</sup>

**DATA:**  
Fevereiro / 2017

**RESPONSÁVEL TÉCNICO:**  
AMANDA ALEXANDRE SVALDI  
Prefeitura Municipal de Paulo Lopes  
Engenheira Civil - Matrícula 11273  
CREA/SC 124.549 - 1

**CONTEÚDO:**  
Estrutural  
Detalhes

**ESCALA:**  
Indicada  
Dimensões em cm

**FOLHA:**  
UBS 06 / 06